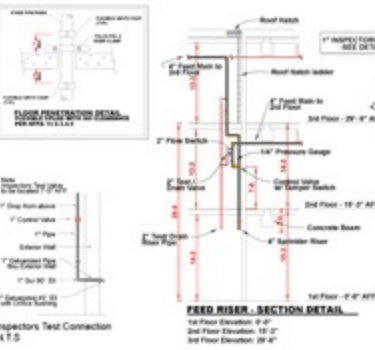
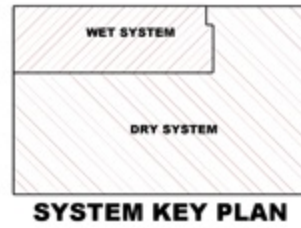
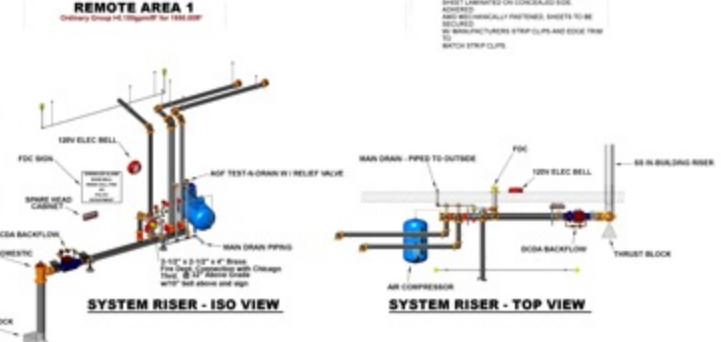
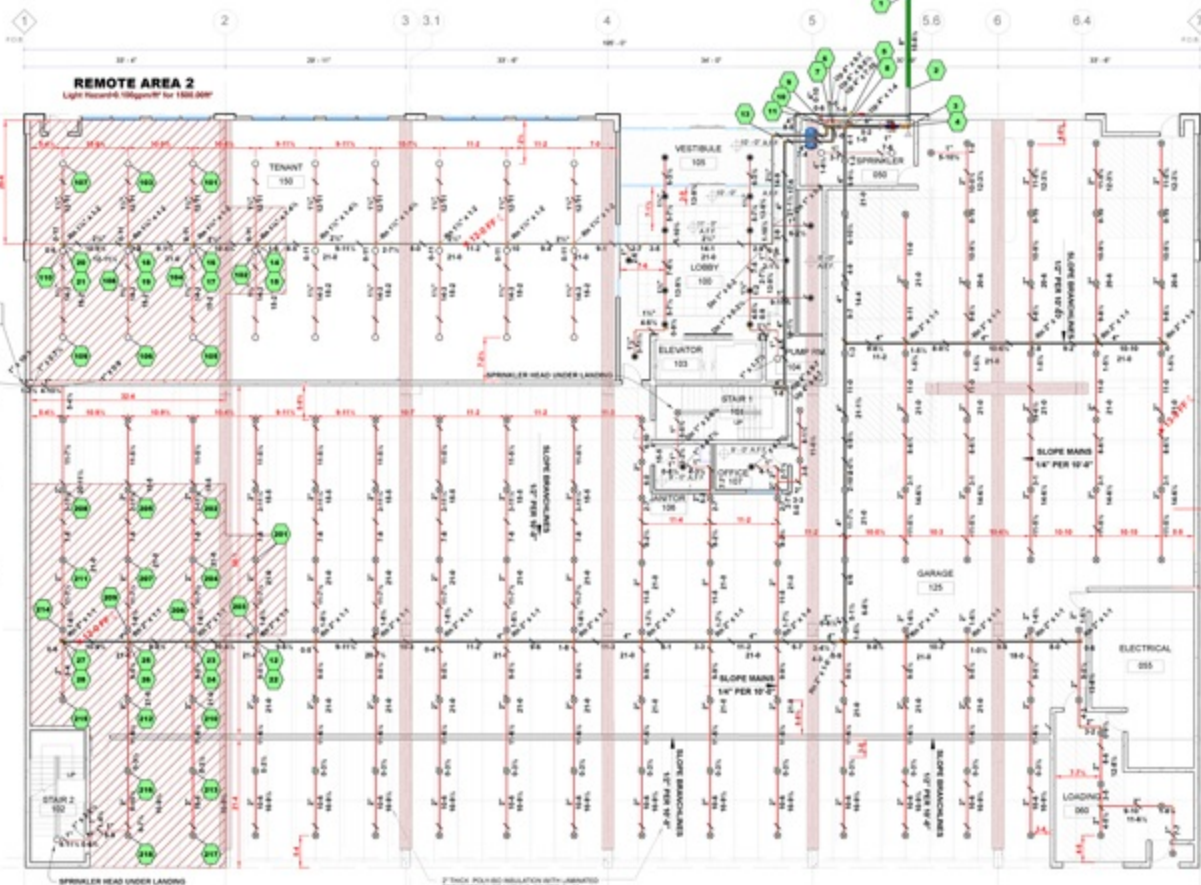
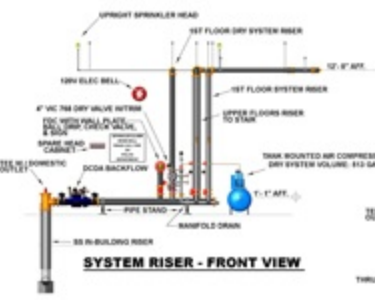


Hydraulic Information	
Remote Area 2	
OCCUPANCY CLASSIFICATION	Light Hazard
DENSITY	0.100gpm/ft ² for 1500.000' (Actual 1943.130')
TOTAL NOSE STREAMS	100.00
TOTAL HEADS FLOWING	10
K FACTOR	5.6
TOTAL WATER REQUIRED	246.70
TOTAL PRESSURE REQUIRED	38.713
BASE of RISER (gpm)	186.70
BASE of RISER (psi)	38.690
SAFETY MARGIN (psi)	+5.177 (13.6%)



Hydraulic Information	
Ordinary Group 1	
DENSITY	0.150gpm/ft ² for 1500.000' (Actual 1953.070')
TOTAL NOSE STREAMS	250.00
TOTAL HEADS FLOWING	18
K FACTOR	8
TOTAL WATER REQUIRED	652.16
TOTAL PRESSURE REQUIRED	35.875
BASE of RISER (gpm)	403.16
BASE of RISER (psi)	35.792
SAFETY MARGIN (psi)	+7.621 (17.6%)

DRY SYSTEM VOLUME: 513 GAL



WATER SUPPLY	
Static Pressure	44.000
Residual Pressure	38.000
Flow	2500.00
Outside Hose Flow	250.00



Standard Symbols	
	1/2" Inlet Valve
	Key Operated Valve
	Public Hydrant
	Fire Dept. Connection
	0.5 BT Gals Valve
	Check Valve
	New Underground
	Existing Underground
	Alarm Check Valve
	Thrust Block
	Backflow Preventer
	Upright on 1" Outlet
	Upright on 1" Riser
	Upright over Pedestal
	Sidewall on 1" Outlet
	Sidewall on 1" Riser

- GENERAL SYSTEM NOTES**
1. REFER TO ALL OTHER DRAWINGS FOR GENERAL NOTES.
 2. REFER TO ALL OTHER DRAWINGS FOR GENERAL NOTES.
 3. ALL WORK SHALL BE DONE IN ACCORDANCE WITH THE LATEST EDITIONS OF THE NFPA 96, NFPA 13, NFPA 20, NFPA 24, NFPA 25, NFPA 30, NFPA 31, NFPA 32, NFPA 33, NFPA 35, NFPA 36, NFPA 37, NFPA 38, NFPA 39, NFPA 40, NFPA 41, NFPA 42, NFPA 43, NFPA 44, NFPA 45, NFPA 46, NFPA 47, NFPA 48, NFPA 49, NFPA 50, NFPA 51, NFPA 52, NFPA 53, NFPA 54, NFPA 55, NFPA 56, NFPA 57, NFPA 58, NFPA 59, NFPA 60, NFPA 61, NFPA 62, NFPA 63, NFPA 64, NFPA 65, NFPA 66, NFPA 67, NFPA 68, NFPA 69, NFPA 70, NFPA 71, NFPA 72, NFPA 73, NFPA 74, NFPA 75, NFPA 76, NFPA 77, NFPA 78, NFPA 79, NFPA 80, NFPA 81, NFPA 82, NFPA 83, NFPA 84, NFPA 85, NFPA 86, NFPA 87, NFPA 88, NFPA 89, NFPA 90, NFPA 91, NFPA 92, NFPA 93, NFPA 94, NFPA 95, NFPA 96, NFPA 97, NFPA 98, NFPA 99, NFPA 100, NFPA 101, NFPA 102, NFPA 103, NFPA 104, NFPA 105, NFPA 106, NFPA 107, NFPA 108, NFPA 109, NFPA 110, NFPA 111, NFPA 112, NFPA 113, NFPA 114, NFPA 115, NFPA 116, NFPA 117, NFPA 118, NFPA 119, NFPA 120, NFPA 121, NFPA 122, NFPA 123, NFPA 124, NFPA 125, NFPA 126, NFPA 127, NFPA 128, NFPA 129, NFPA 130, NFPA 131, NFPA 132, NFPA 133, NFPA 134, NFPA 135, NFPA 136, NFPA 137, NFPA 138, NFPA 139, NFPA 140, NFPA 141, NFPA 142, NFPA 143, NFPA 144, NFPA 145, NFPA 146, NFPA 147, NFPA 148, NFPA 149, NFPA 150, NFPA 151, NFPA 152, NFPA 153, NFPA 154, NFPA 155, NFPA 156, NFPA 157, NFPA 158, NFPA 159, NFPA 160, NFPA 161, NFPA 162, NFPA 163, NFPA 164, NFPA 165, NFPA 166, NFPA 167, NFPA 168, NFPA 169, NFPA 170, NFPA 171, NFPA 172, NFPA 173, NFPA 174, NFPA 175, NFPA 176, NFPA 177, NFPA 178, NFPA 179, NFPA 180, NFPA 181, NFPA 182, NFPA 183, NFPA 184, NFPA 185, NFPA 186, NFPA 187, NFPA 188, NFPA 189, NFPA 190, NFPA 191, NFPA 192, NFPA 193, NFPA 194, NFPA 195, NFPA 196, NFPA 197, NFPA 198, NFPA 199, NFPA 200.
 4. ALL WORK SHALL BE DONE IN ACCORDANCE WITH THE LATEST EDITIONS OF THE NFPA 96, NFPA 13, NFPA 20, NFPA 24, NFPA 25, NFPA 30, NFPA 31, NFPA 32, NFPA 33, NFPA 35, NFPA 36, NFPA 37, NFPA 38, NFPA 39, NFPA 40, NFPA 41, NFPA 42, NFPA 43, NFPA 44, NFPA 45, NFPA 46, NFPA 47, NFPA 48, NFPA 49, NFPA 50, NFPA 51, NFPA 52, NFPA 53, NFPA 54, NFPA 55, NFPA 56, NFPA 57, NFPA 58, NFPA 59, NFPA 60, NFPA 61, NFPA 62, NFPA 63, NFPA 64, NFPA 65, NFPA 66, NFPA 67, NFPA 68, NFPA 69, NFPA 70, NFPA 71, NFPA 72, NFPA 73, NFPA 74, NFPA 75, NFPA 76, NFPA 77, NFPA 78, NFPA 79, NFPA 80, NFPA 81, NFPA 82, NFPA 83, NFPA 84, NFPA 85, NFPA 86, NFPA 87, NFPA 88, NFPA 89, NFPA 90, NFPA 91, NFPA 92, NFPA 93, NFPA 94, NFPA 95, NFPA 96, NFPA 97, NFPA 98, NFPA 99, NFPA 100.
 5. REFER TO ALL OTHER DRAWINGS FOR GENERAL NOTES.
 6. REFER TO ALL OTHER DRAWINGS FOR GENERAL NOTES.
 7. REFER TO ALL OTHER DRAWINGS FOR GENERAL NOTES.
 8. REFER TO ALL OTHER DRAWINGS FOR GENERAL NOTES.
 9. REFER TO ALL OTHER DRAWINGS FOR GENERAL NOTES.
 10. REFER TO ALL OTHER DRAWINGS FOR GENERAL NOTES.

1ST FLOOR FIRE SPRINKLER PIPING PLAN